

# Chapter 2

## Application Layer

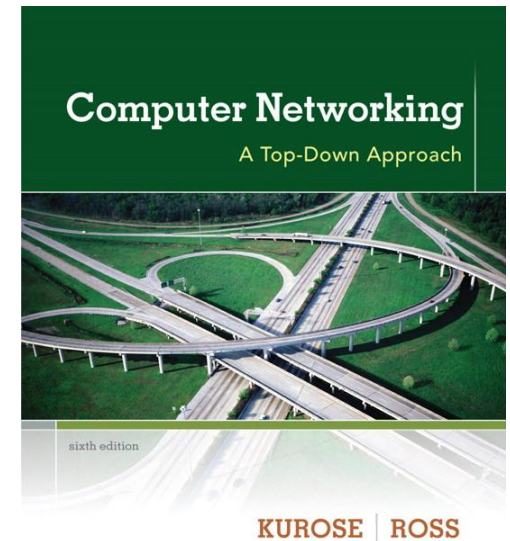
### A note on the use of these ppt slides:

We're making these slides freely available to all (faculty, students, readers). They're in PowerPoint form so you see the animations; and can add, modify, and delete slides (including this one) and slide content to suit your needs. They obviously represent a *lot* of work on our part. In return for use, we only ask the following:

- ❖ If you use these slides (e.g., in a class) that you mention their source (after all, we'd like people to use our book!)
- ❖ If you post any slides on a www site, that you note that they are adapted from (or perhaps identical to) our slides, and note our copyright of this material.

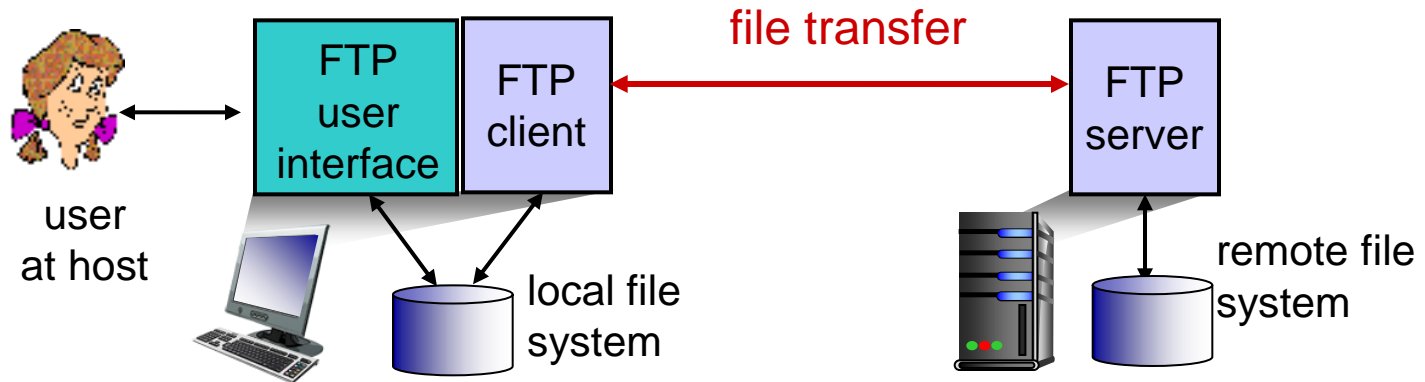
Thanks and enjoy! JFK/KWR

© All material copyright 1996-2012  
J.F Kurose and K.W. Ross, All Rights Reserved



**Computer  
Networking: A Top  
Down Approach**  
6<sup>th</sup> edition  
Jim Kurose, Keith Ross  
Addison-Wesley  
March 2012

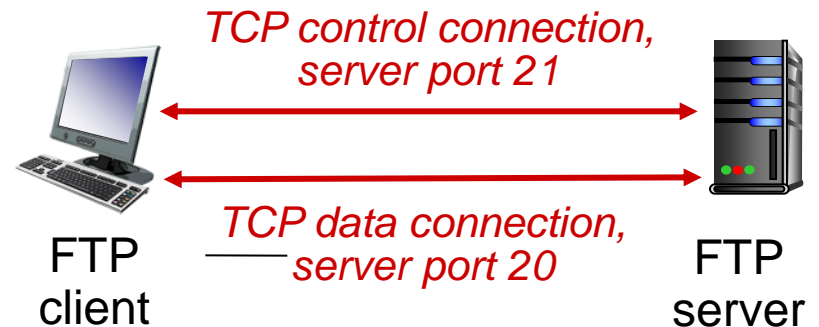
# FTP: the file transfer protocol



- ❖ transfer file to/from remote host
- ❖ client/server model
  - *client*: side that initiates transfer (either to/from remote)
  - *server*: remote host
- ❖ ftp: RFC 959
- ❖ ftp server: port 21

# FTP: separate control, data connections

- ❖ FTP client contacts FTP server at port 21, using TCP
- ❖ client authorized over control connection
- ❖ client browses remote directory, sends commands over control connection
- ❖ when server receives file transfer command, *server* opens 2<sup>nd</sup> TCP data connection (for file) to client
- ❖ after transferring one file, server closes data connection



- ❖ server opens another TCP data connection to transfer another file
- ❖ control connection: “*out of band*”
- ❖ FTP server maintains “state”: current directory, earlier authentication

# FTP commands, responses

## *sample commands:*

- ❖ sent as ASCII text over control channel
- ❖ **USER *username***
- ❖ **PASS *password***
- ❖ **LIST** return list of file in current directory
- ❖ **RETR *filename*** retrieves (gets) file
- ❖ **STOR *filename*** stores (puts) file onto remote host

## *sample return codes*

- ❖ status code and phrase (as in HTTP)
- ❖ **331 Username OK, password required**
- ❖ **125 data connection already open; transfer starting**
- ❖ **425 Can't open data connection**
- ❖ **452 Error writing file**

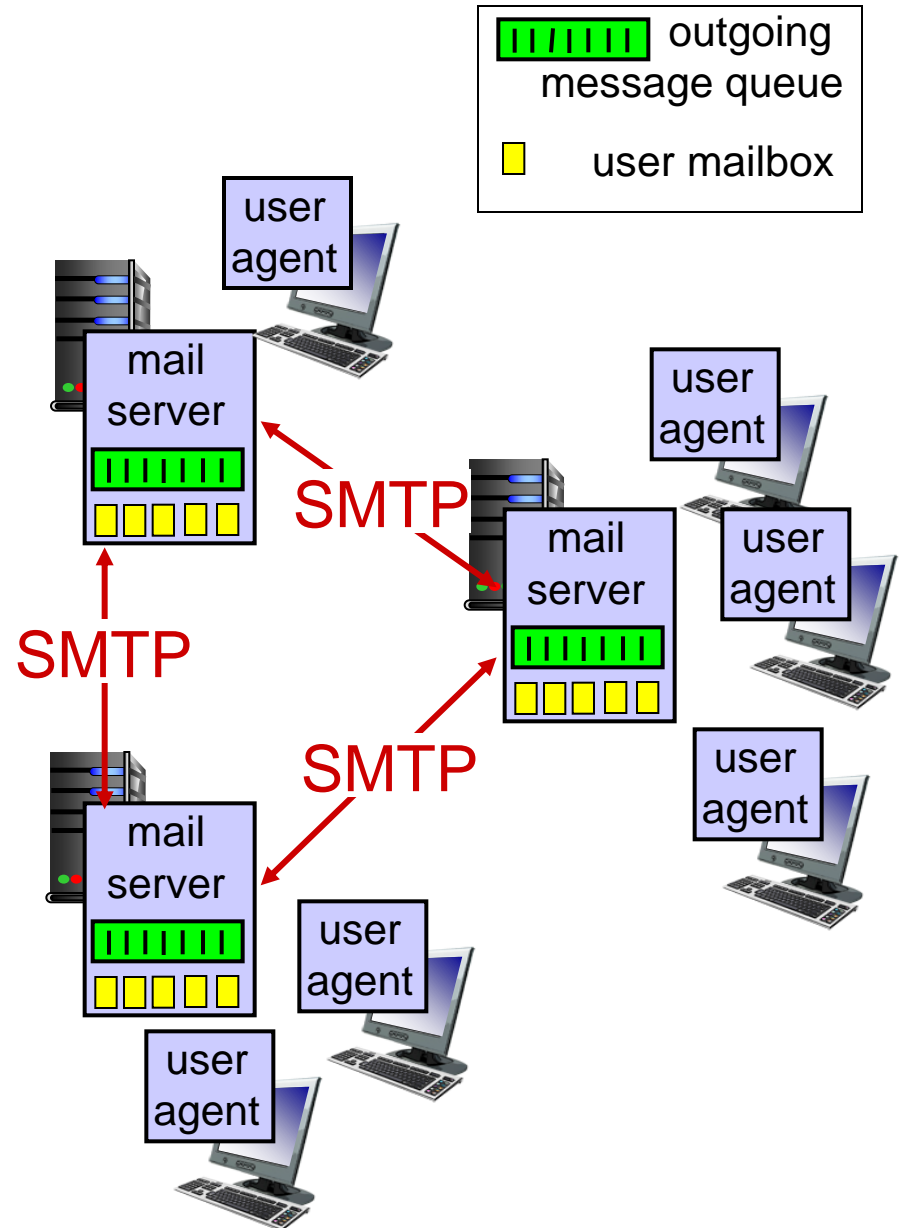
# Electronic mail

## *Three major components:*

- ❖ user agents
- ❖ mail servers
- ❖ simple mail transfer protocol: SMTP

## *User Agent*

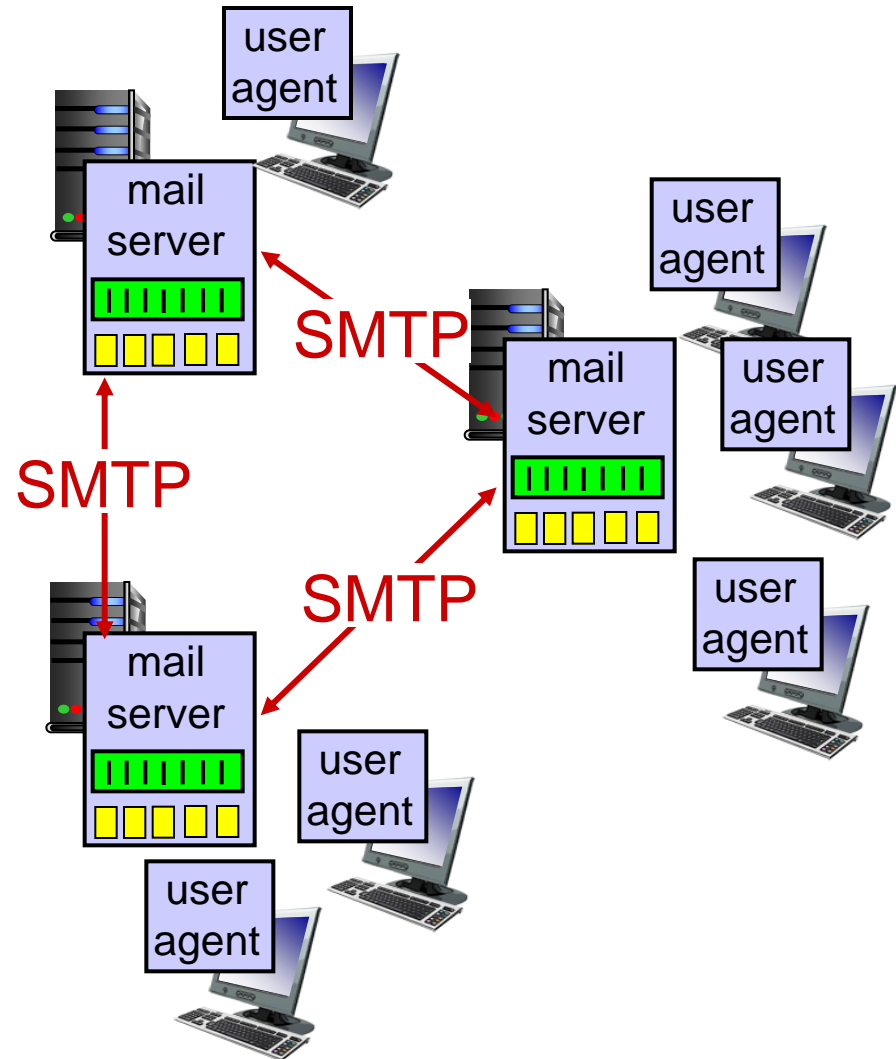
- ❖ a.k.a. “mail reader”
- ❖ composing, editing, reading mail messages
- ❖ e.g., Outlook, Thunderbird, iPhone mail client
- ❖ outgoing, incoming messages stored on server



# Electronic mail: mail servers

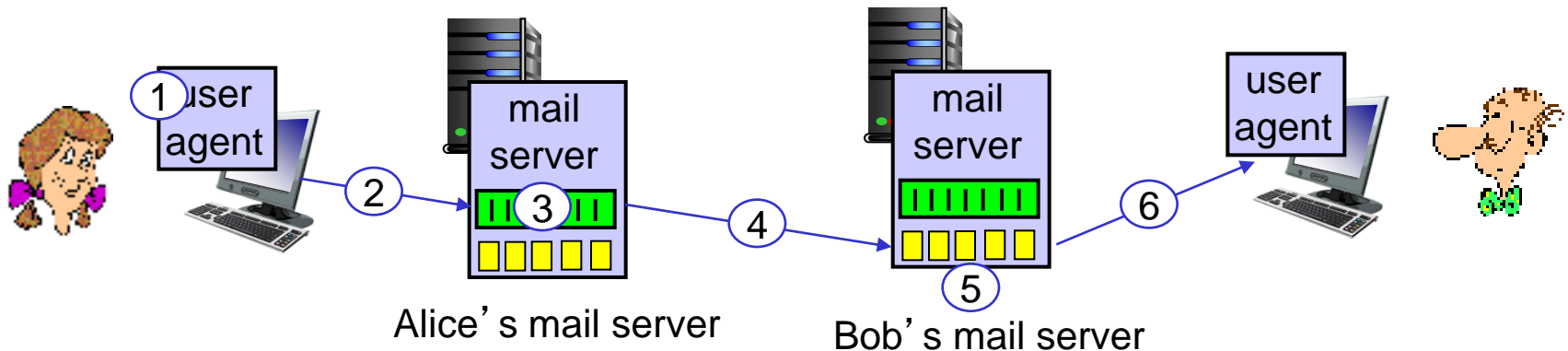
## mail servers:

- ❖ *mailbox* contains incoming messages for user
- ❖ *message queue* of outgoing (to be sent) mail messages
- ❖ *SMTP protocol* between mail servers to send email messages
  - client: sending mail server
  - “server”: receiving mail server



# Scenario: Alice sends message to Bob

- 1) Alice uses UA to compose message "to" bob@someschool.edu
- 2) Alice's UA sends message to her mail server; message placed in message queue
- 3) client side of SMTP opens TCP connection with Bob's mail server
- 4) SMTP client sends Alice's message over the TCP connection
- 5) Bob's mail server places the message in Bob's mailbox
- 6) Bob invokes his user agent to read message



# SMTP: final words

- ❖ SMTP uses persistent connections
- ❖ SMTP requires message (header & body) to be in 7-bit ASCII
- ❖ SMTP server uses CRLF . CRLF to determine end of message

## *comparison with HTTP:*

- ❖ HTTP: pull
- ❖ SMTP: push
- ❖ both have ASCII command/response interaction, status codes
- ❖ HTTP: each object encapsulated in its own response msg
- ❖ SMTP: multiple objects sent in multipart msg

# Mail message format

SMTP: protocol for exchanging email msgs

RFC 822: standard for text message format:

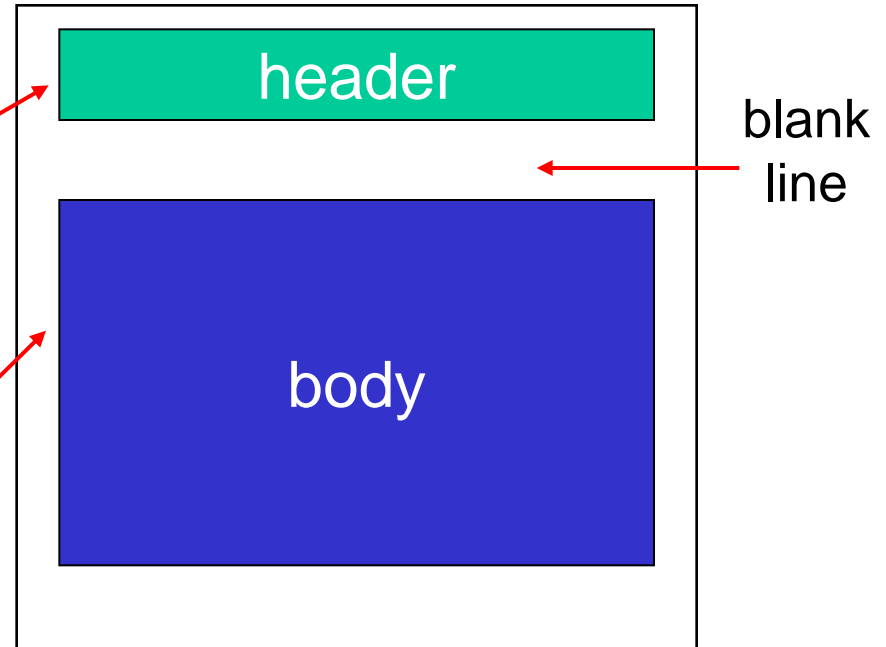
❖ header lines, e.g.,

- To:
- From:
- Subject:

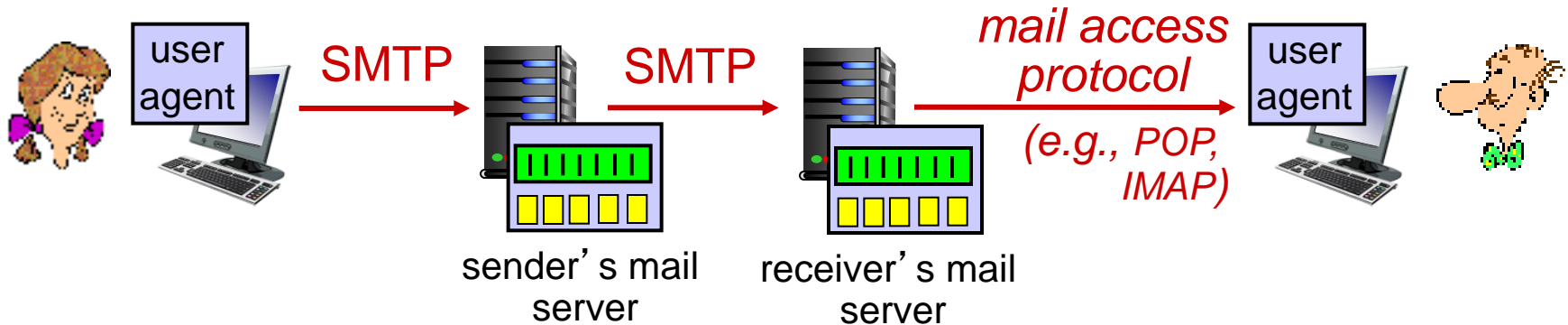
*different* from SMTP MAIL FROM, RCPT TO: commands!

❖ Body: the “message”

- ASCII characters only



# Mail access protocols



- ❖ **SMTP**: delivery/storage to receiver's server
- ❖ mail access protocol: retrieval from server
  - **POP**: Post Office Protocol [RFC 1939]: authorization, download
  - **IMAP**: Internet Mail Access Protocol [RFC 1730]: more features, including manipulation of stored msgs on server
  - **HTTP**: gmail, Hotmail, Yahoo! Mail, etc.

# DNS: domain name system

*people*: many identifiers:

- SSN, name, passport #

*Internet hosts, routers*:

- IP address (32 bit) - used for addressing datagrams
- “name”, e.g., www.yahoo.com - used by humans

Q: how to map between IP address and name, and vice versa ?

*Domain Name System*:

- ❖ *distributed database* implemented in hierarchy of many *name servers*
- ❖ *application-layer protocol*: hosts, name servers communicate to *resolve* names (address/name translation)
  - note: core Internet function, implemented as application-layer protocol
  - complexity at network's “edge”

# DNS: services, structure

## *DNS services*

- ❖ hostname to IP address translation
- ❖ host aliasing
  - canonical, alias names
- ❖ mail server aliasing
- ❖ load distribution
  - replicated Web servers: many IP addresses correspond to one name

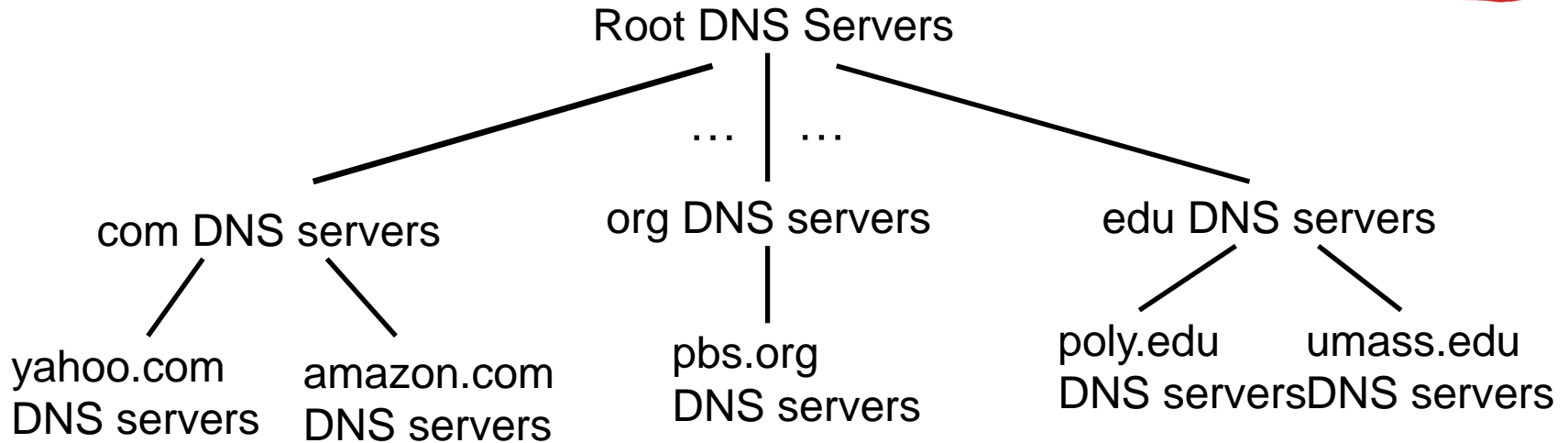
## *why not centralize DNS?*

- ❖ single point of failure
- ❖ traffic volume
- ❖ distant centralized database
- ❖ maintenance

*A: doesn't scale!*

# DNS: a distributed, hierarchical database

---

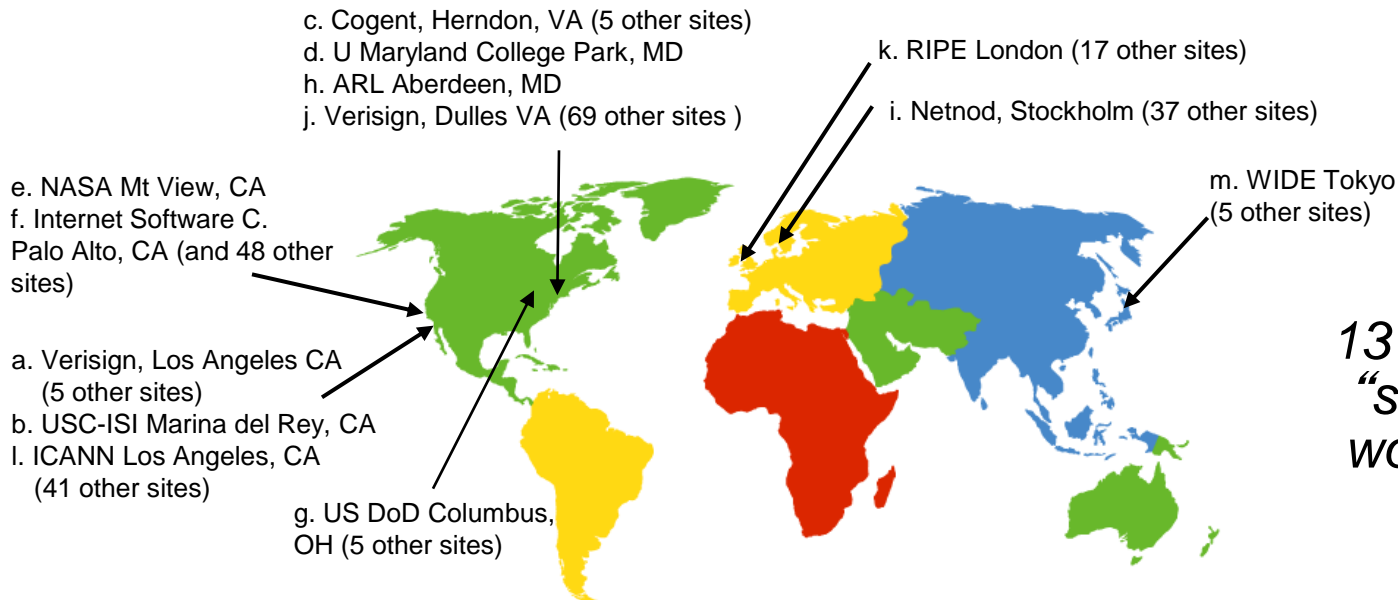


*client wants IP for www.amazon.com; 1<sup>st</sup> approx:*

- ❖ client queries root server to find com DNS server
- ❖ client queries .com DNS server to get amazon.com DNS server
- ❖ client queries amazon.com DNS server to get IP address for www.amazon.com

# DNS: root name servers

- ❖ contacted by local name server that can not resolve name
- ❖ root name server:
  - contacts authoritative name server if name mapping not known
  - gets mapping
  - returns mapping to local name server



*13 root name  
“servers”  
worldwide*

# TLD, authoritative servers

## *top-level domain (TLD) servers:*

- responsible for com, org, net, edu, aero, jobs, museums, and all top-level country domains, e.g.: uk, fr, ca, jp
- Network Solutions maintains servers for .com TLD
- Educause for .edu TLD

## *authoritative DNS servers:*

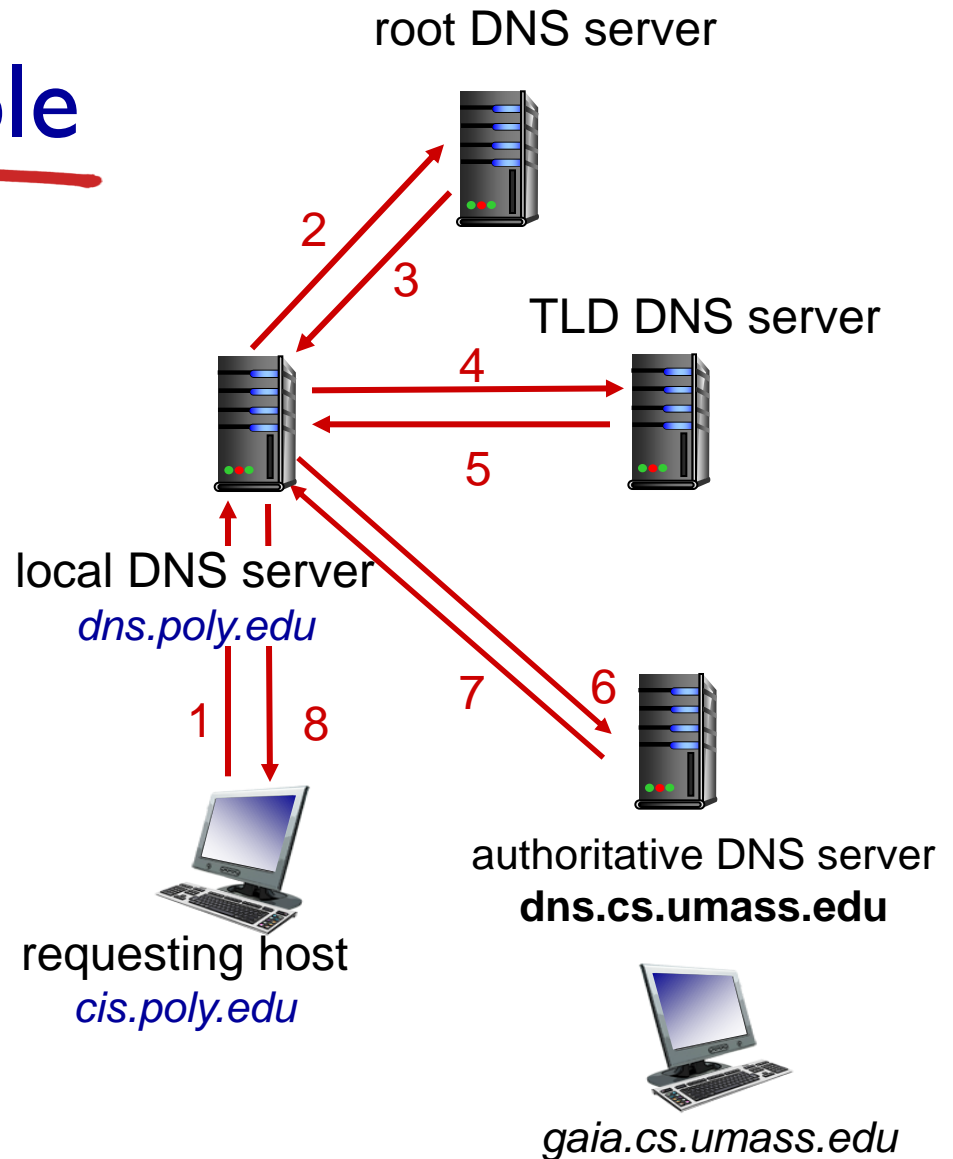
- organization's own DNS server(s), providing authoritative hostname to IP mappings for organization's named hosts
- can be maintained by organization or service provider

# DNS name resolution example

- ❖ host at `cis.poly.edu` wants IP address for `gaia.cs.umass.edu`

## *iterated query:*

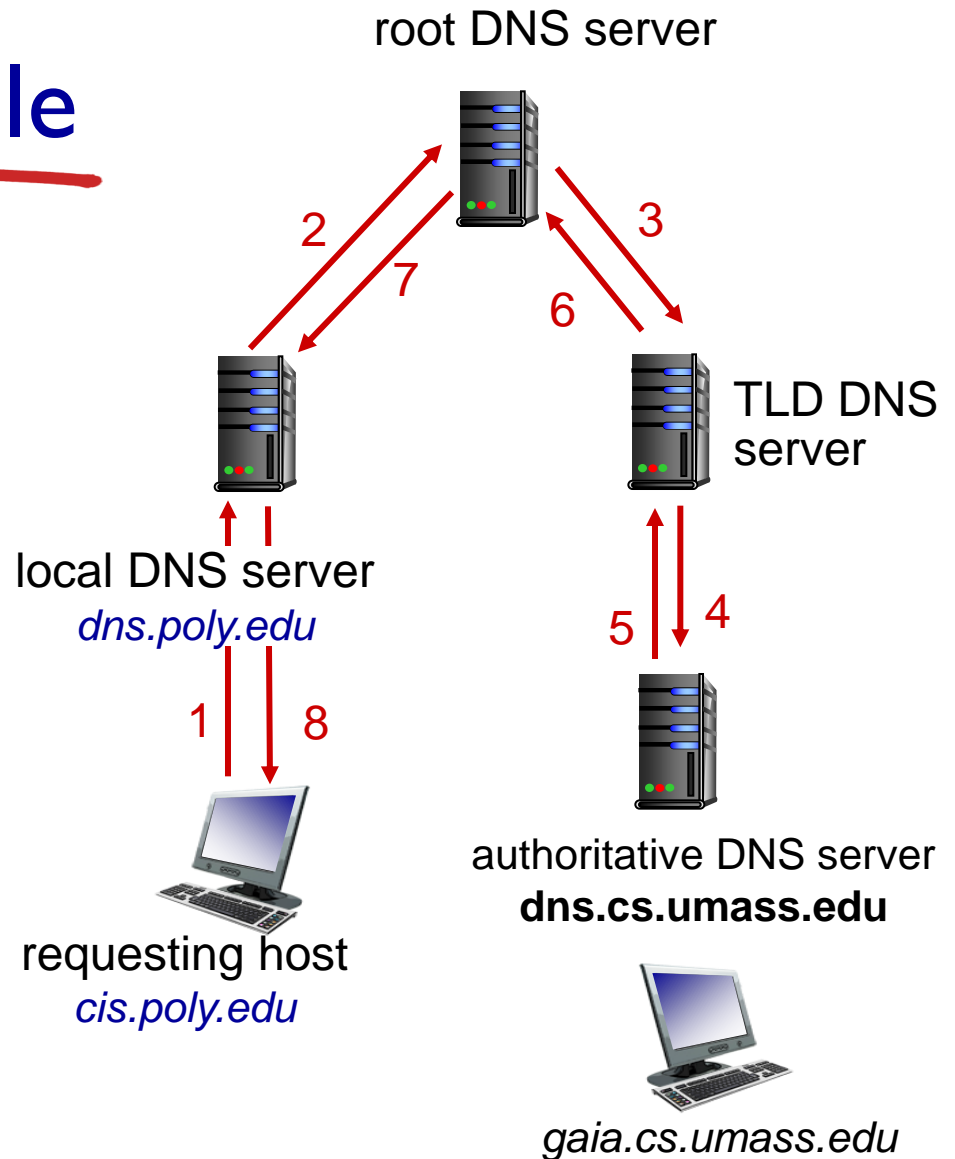
- ❖ contacted server replies with name of server to contact
- ❖ “I don’t know this name, but ask this server”



# DNS name resolution example

## *recursive query:*

- ❖ puts burden of name resolution on contacted name server
- ❖ heavy load at upper levels of hierarchy?



# DNS: caching, updating records

- ❖ once (any) name server learns mapping, it  *caches*  mapping
  - cache entries timeout (disappear) after some time (TTL)
  - TLD servers typically cached in local name servers
    - thus root name servers not often visited
- ❖ cached entries may be  *out-of-date*  (best effort name-to-address translation!)
  - if name host changes IP address, may not be known Internet-wide until all TTLs expire
- ❖ update/notify mechanisms proposed IETF standard
  - RFC 2136

# Attacking DNS

## DDoS attacks

- ❖ Bombard root servers with traffic
  - Not successful to date
  - Traffic Filtering
  - Local DNS servers cache IPs of TLD servers, allowing root server bypass
- ❖ Bombard TLD servers
  - Potentially more dangerous

## Redirect attacks

- ❖ Man-in-middle
  - Intercept queries
- ❖ DNS poisoning
  - Send bogus replies to DNS server, which caches

## Exploit DNS for DDoS

- ❖ Send queries with spoofed source address: target IP
- ❖ Requires amplification